

## INSPECTION

### 1. CHECK FLUID LEVEL

- Keep the vehicle level.
- With the engine stopped, check the fluid level in the oil reservoir.

If necessary, add fluid.

**Fluid: ATF DEXRON® II or III**

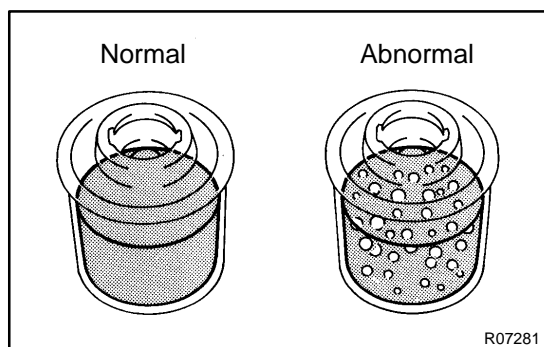
#### HINT:

Check that the fluid level is within the HOT LEVEL range on the reservoir cap dipstick.

If the fluid is cold, check that it is within the COLD LEVEL range.

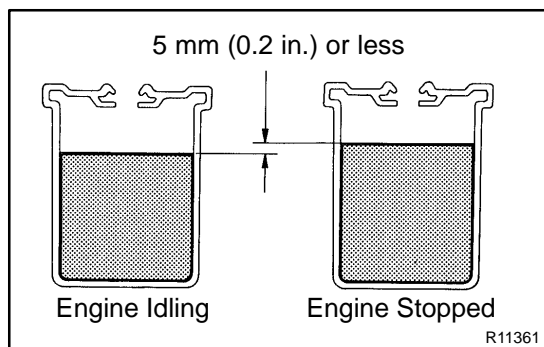
- Start the engine and run it at idle.
- Turn the steering wheel from lock to lock several times to boost fluid temperature.

**Fluid temperature: 80°C (176°F)**



- Check for foaming or emulsification.

If there is foaming or emulsification, bleed power steering system (See page [SR-3](#)).



- With the engine idling, measure the fluid level in the oil reservoir.

- Stop the engine.

- Wait a few minutes and remeasure the fluid level in the oil reservoir.

**Maximum fluid level rise: 5 mm (0.20 in.)**

If a problem is found, bleed power steering system (See page [SR-3](#)).

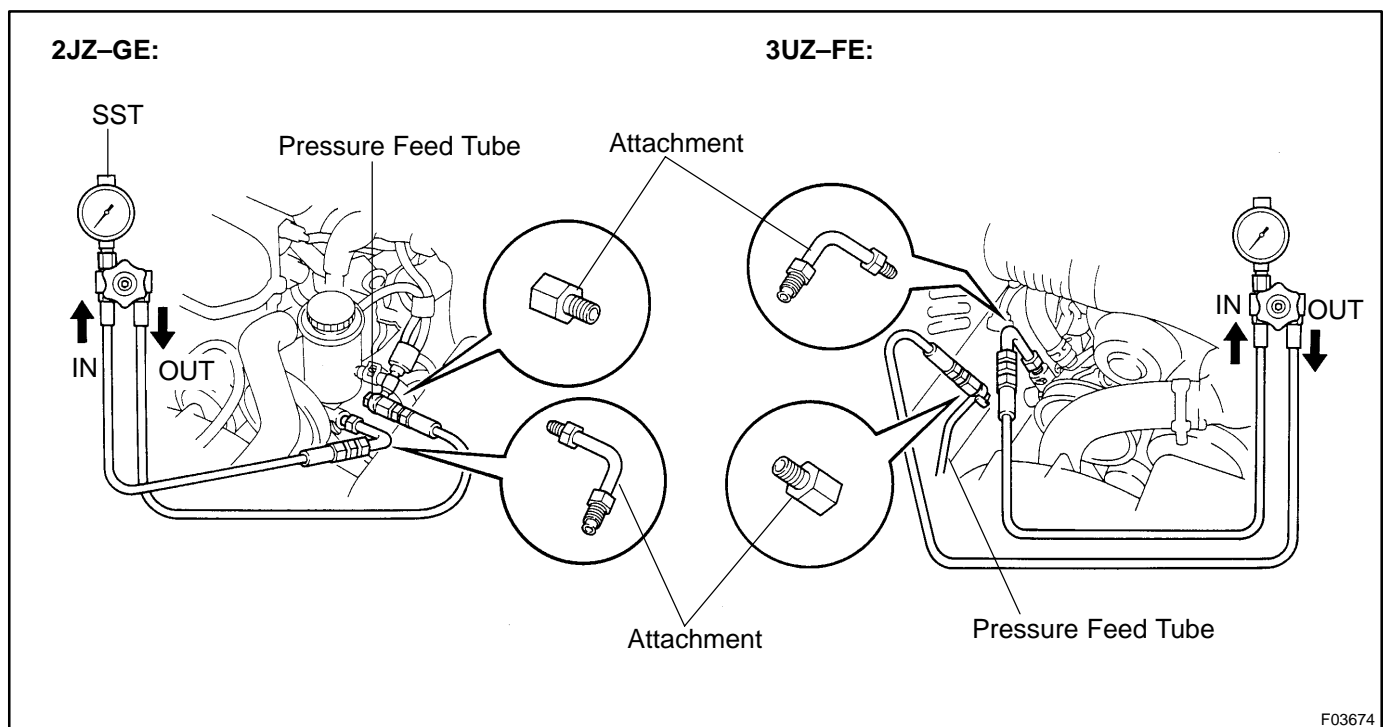
- Check the fluid level.

**2. CHECK STEERING FLUID PRESSURE**

- (a) 3UZ-FE:  
Remove the air cleaner inlet.
- (b) 3UZ-FE:  
Remove the air cleaner assembly with air cleaner hose.  
(See page [SR-33](#))
- (c) Disconnect the pressure feed tube from the PS vane pump.  
(2JZ-GE Engine: See page [SR-22](#))  
(3UZ-FE Engine: See page [SR-33](#))  
SST 09023-12700
- (d) Connect SST, as shown below.  
SST 09640-10010 (09641-01010, 09641-01030, 09641-01060)

**NOTICE:**

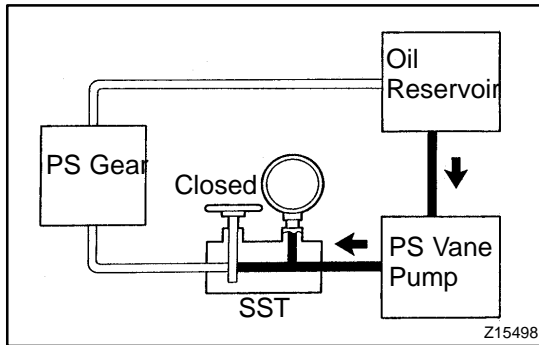
**Check that the valve of the SST is in the open position.**



F03674

- (e) Bleed the power steering system (See page [SR-3](#)).
- (f) Start the engine and run it at idle.
- (g) Turn the steering wheel from lock to lock several times to boost fluid temperature.

**Fluid temperature: 80 °C (176 °F)**

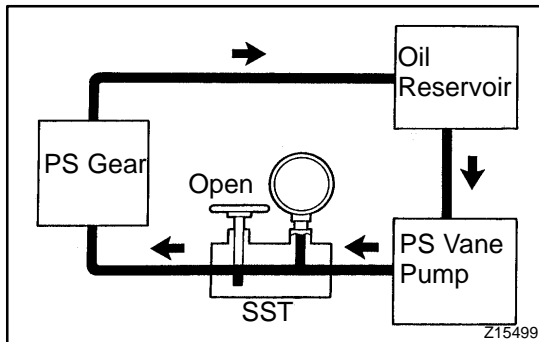


- (h) With the engine idling, close the valve of the SST and observe the reading on the SST.

**Minimum fluid pressure:**  
**8,336 kPa (85 kgf/cm<sup>2</sup>, 1,209 psi)**

**NOTICE:**

- Do not keep the valve closed for more than 10 seconds.
- Do not let the fluid temperature become too high.

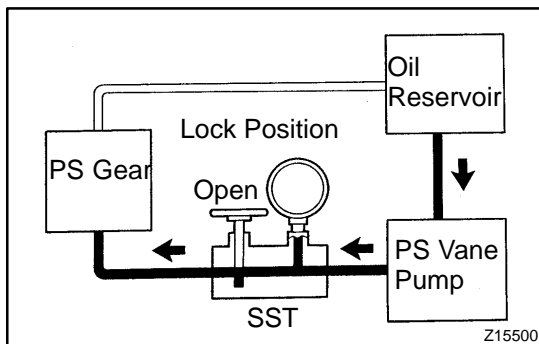


- (i) With the engine idling, open the valve fully.  
 (j) Measure the fluid pressure at engine speeds of 1,000 rpm and 3,000 rpm.

**Difference fluid pressure:**  
**490 kPa (5 kgf/cm<sup>2</sup>, 71 psi) or less**

**NOTICE:**

**Do not turn the steering wheel.**



- (k) With the engine idling and valve fully opened, turn the steering wheel to full lock.

**Minimum fluid pressure:**  
**8,336 kPa (85 kgf/cm<sup>2</sup>, 1,209 psi)**

**NOTICE:**

- Do not maintain lock position for more than 10 seconds.
- Do not let the fluid temperature become too high.

- (l) Disconnect the SST.  
 SST 09640-10010 (09641-01010, 09641-01030, 09641-01060)

- (m) Connect the pressure feed tube.  
 (2JZ-GE Engine: See page [SR-30](#))  
 (3UZ-FE Engine: See page [SR-44](#))

- (n) 3UZ-FE Engine:  
 Install the air cleaner assembly with air cleaner hose (See page [SR-44](#)).

- (o) 3UZ-FE Engine:  
 Install the air cleaner inlet.

- (p) Bleed the power steering system (See page [SR-3](#)).